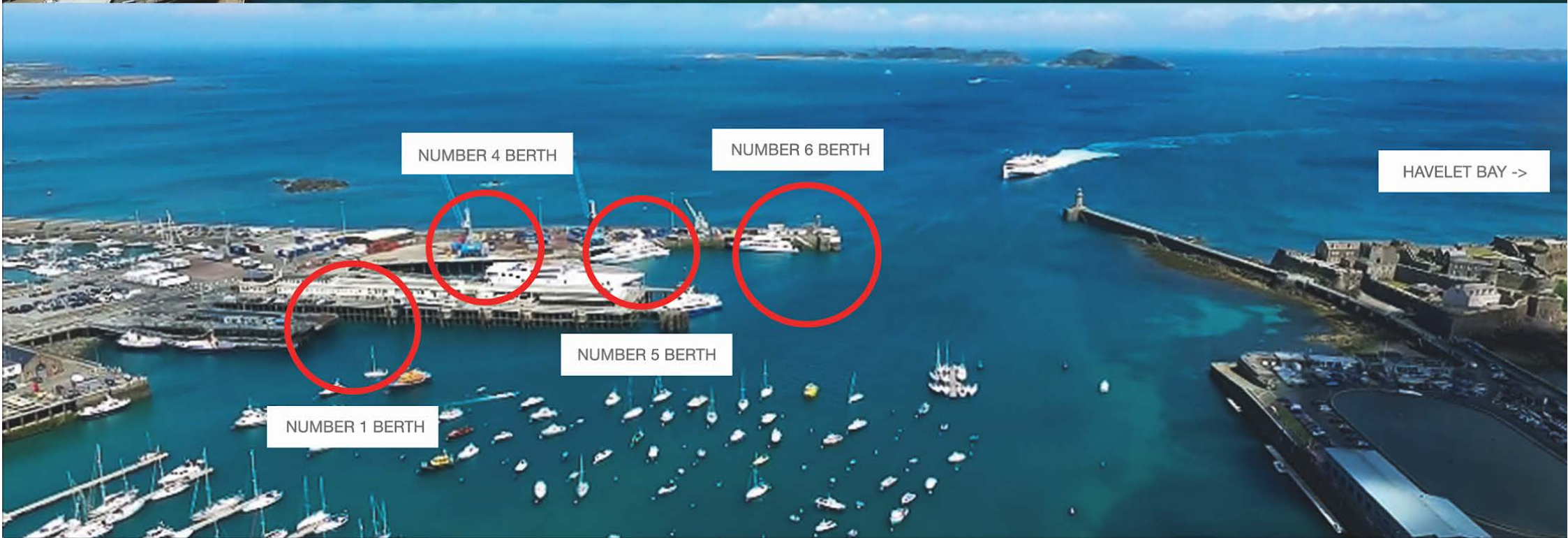
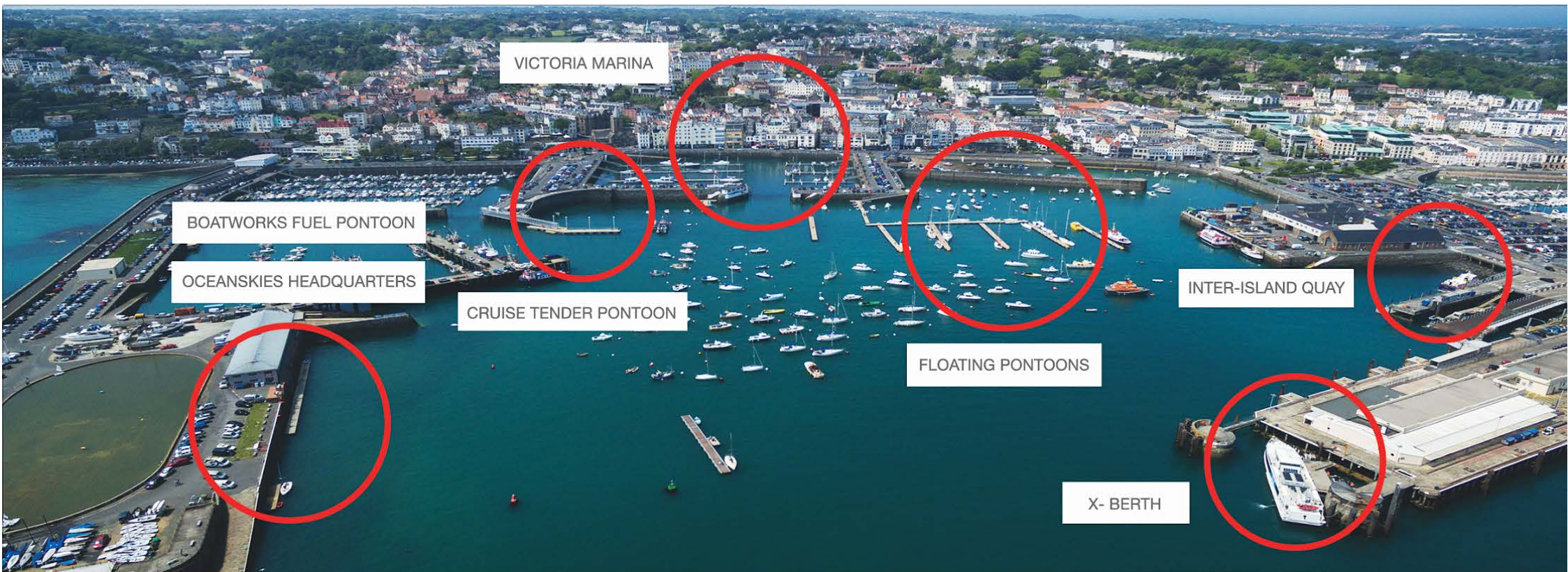


oceanskies
_com

Guernsey Guide to Berthing





Number 1 Berth - 60m upwards





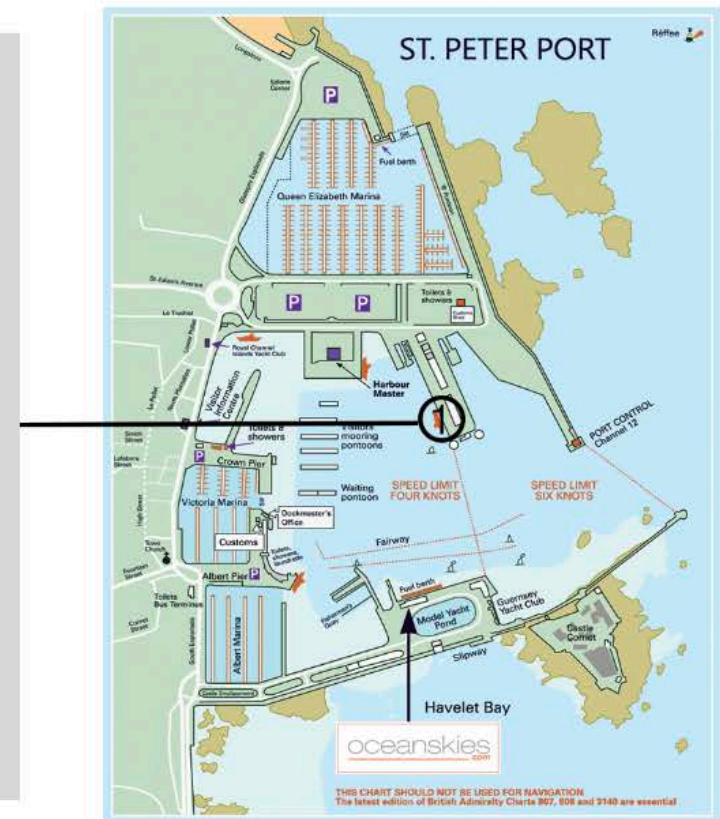
Number 1 Berth can accommodate vessels of 60m and longer in length upto a maximum of 135m.

This berth is also ideal for fuelling, allowing two trucks to be parked alongside to 'piggy back' for fast fuelling.

Shore access would need to be via tender to the nearest pontoon, or if tied up on the portside, access can be via a passerelle.

Spring Low Water has a minimum depth clearance of approx. 5.8m.

Pilotage will be required on entrance and exit for vessels greater than 40m.



Number 4 Berth - Up to 70m





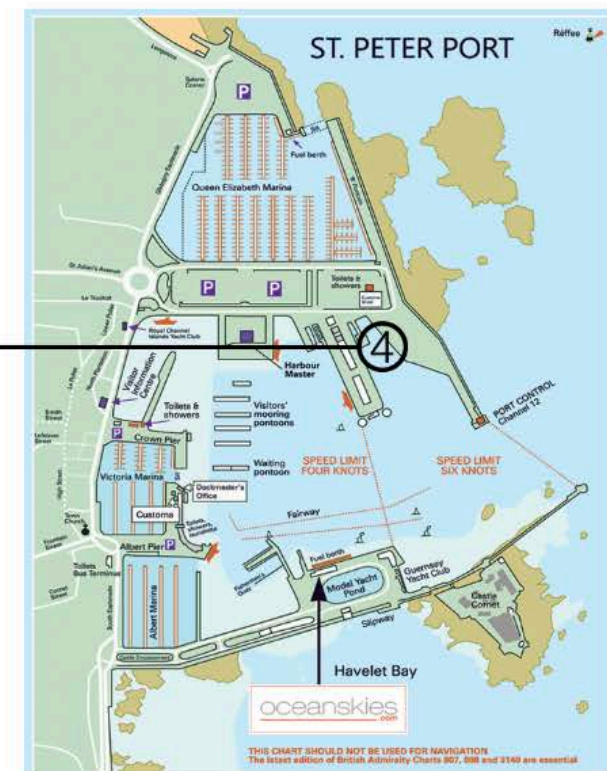
Number 4 Berth can accommodate vessels of 40m-70m in length.

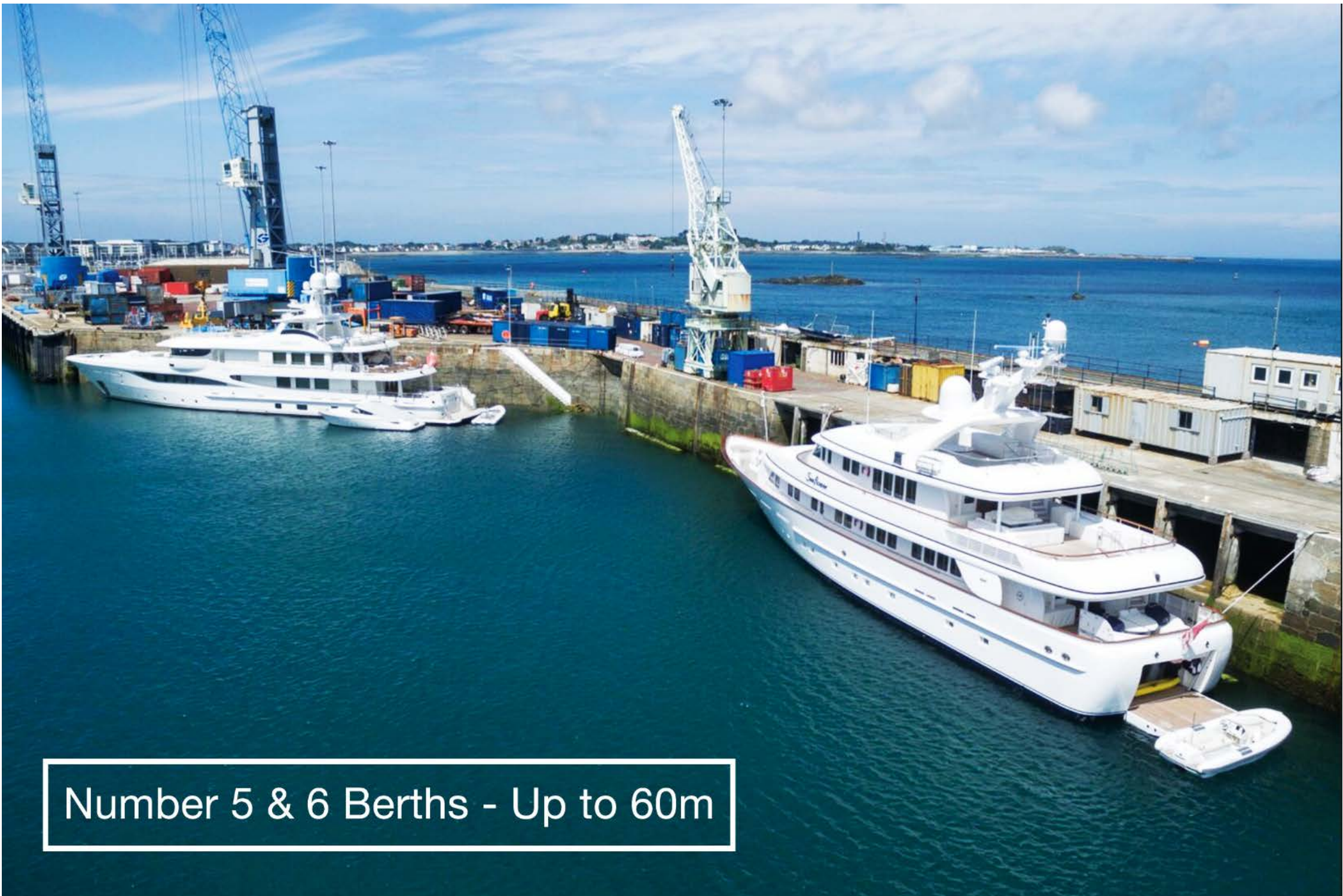
Spring Low Water has a minimum depth clearance of approx. 3.8m.

There is no shore access from this berth therefore access would need to be via tender to be via tender to the best available non-secure pontoon.

Berthing is alongside a steel framework, fenders would need to be used.

Pilotage is required for vessels greater than 40m to enter the harbour and berth in this location.





Number 5 & 6 Berths - Up to 60m



Number 5 berth can accommodate vessels between 40-60m long.

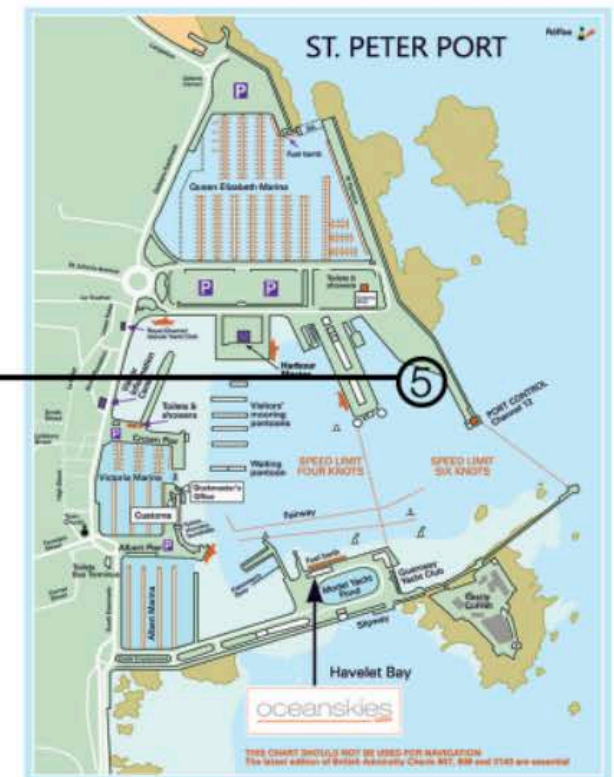
Spring Water has a minimum depth clearance of approx. 2.3m.

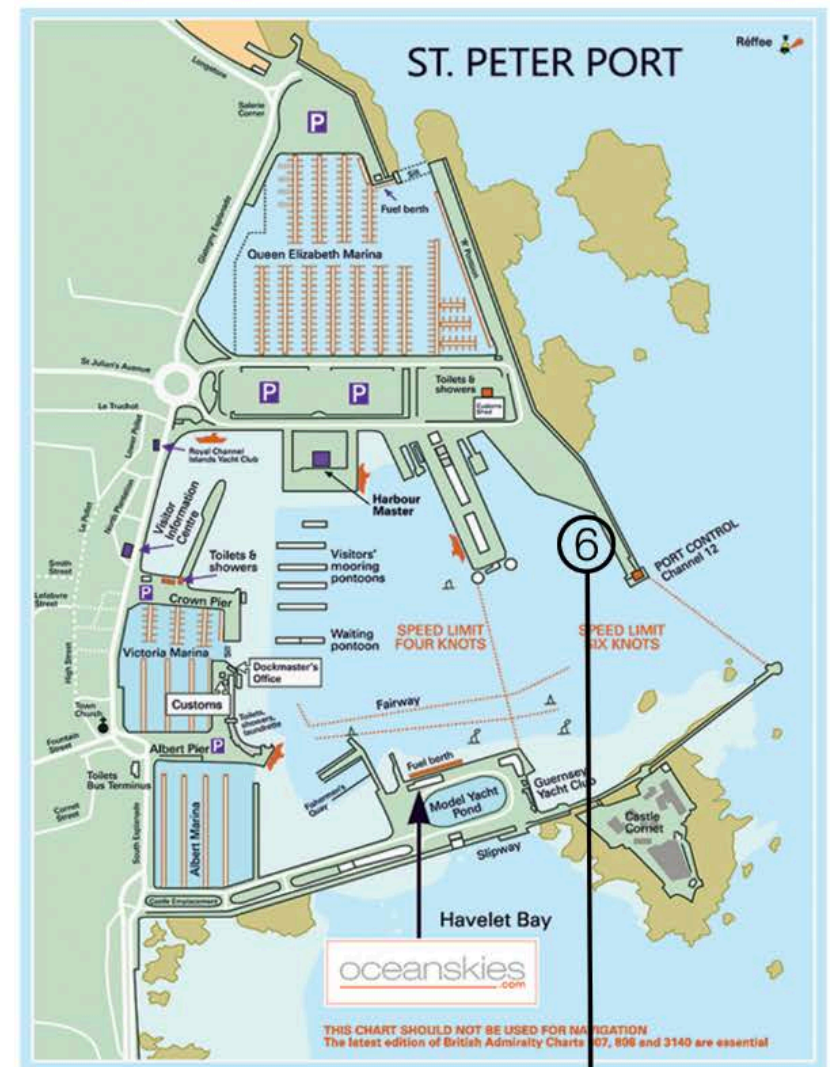
There is no shore access therefore shore access would need to be via tender to the nearest pontoon.

Pilotage is required for vessels over 40m to berth in this location.

The berth is lined with a large central rolling fender.

This is an ideal location for fuelling as fuel trucks have easy access.



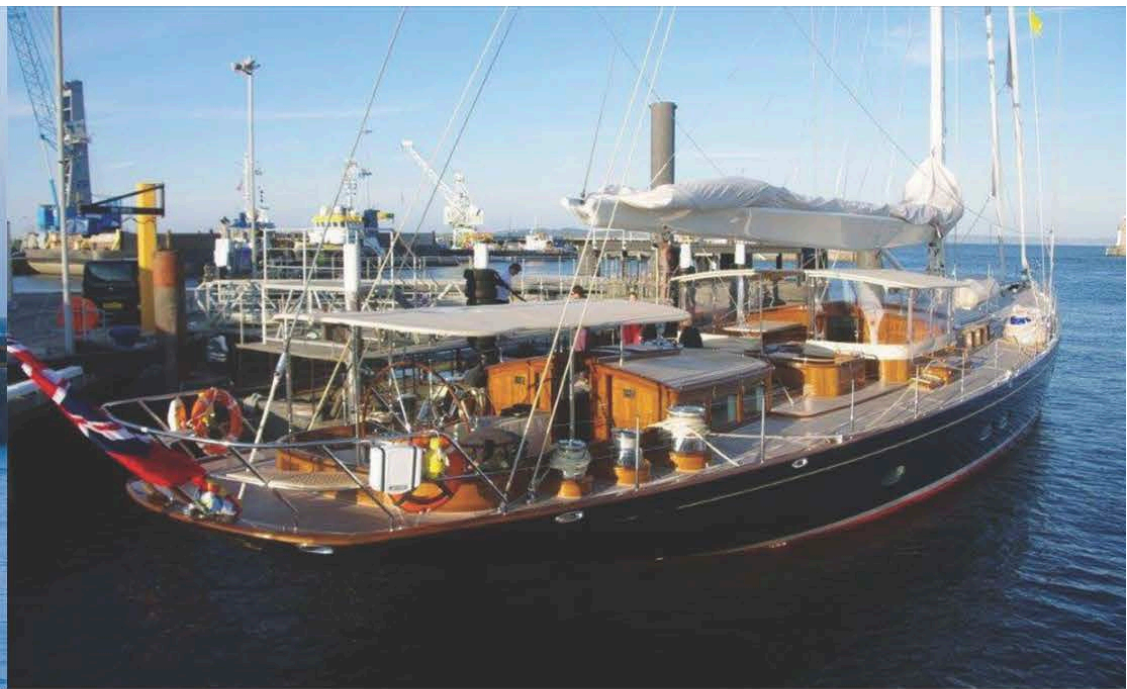


Number 6 Berth accommodates vessels between 40-55m in length.

Similar to Number 5, just without the rolling fender, this berth on a Spring Water Low has a minimum clearance of 2.3m.

X-Berth





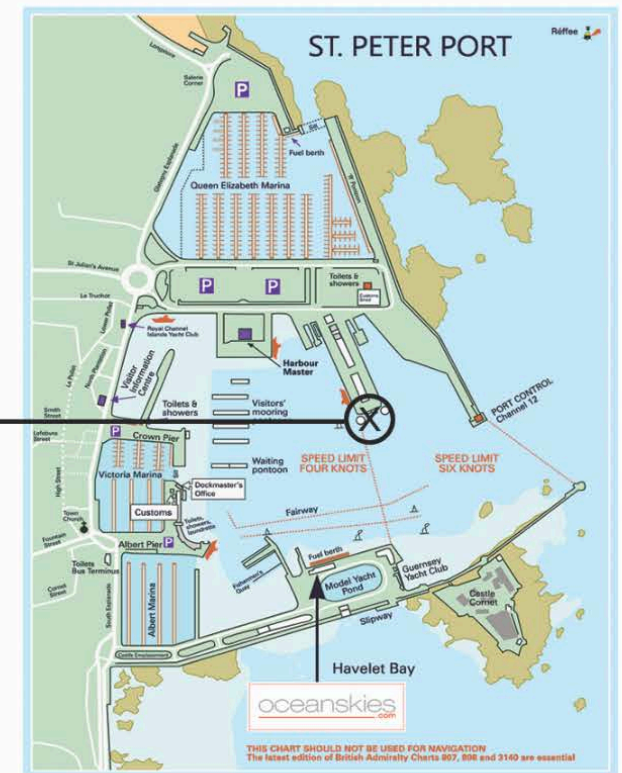
X-Berth can accommodate vessels up to 40m in length.

Spring Low Water has a minimum depth clearance of approx. 5m.

There is no shore access from this berth therefore access would need to be via tender to the best available non-secure pontoon.

Berthing is alongside a steel framework, fenders would need to be used.

Pilotage is required for vessels greater than 30m to enter the harbour and berth in this location.





Boatworks Fuelling Pontoon

Cruise Tender Pontoon



Havelet Bay Anchorage

